

The Education Fellowship Governance

Sponsored Academy Status

The Education Fellowship is a sponsor led Multi Academy Trust (MAT) accountable to the Secretary of State through the National/Regional Schools Commissioners and HMI/OFSTED for the performance of its Academies.

The Education Fellowship Limited and Co-ownership

The Education Fellowship Limited (TEFL) is the company which sponsors Fellowship Academies and is led by the Chief Executive Officer (CEO). TEFL operates a model of Co-Ownership. All who learn and work in Fellowship Academies are Co-owners known as Fellows, who can support and challenge through the representative democratic structures of Academy Forums and Fellowship Council.

The Education Fellowship Trust

The Education Fellowship Trust (TEFT) is the operator of the Fellowship Academies. It is led by the Chief Operations Officer (COO) who is assisted by the Academy Outcomes Director (AOD) who has Executive Principal status. The COO, assisted by the AOD, directs a Field Force of key professionals who perform specific roles across Fellowship Academies: Excellence in Teaching; Performance Data; Welfare and Inclusion; HR; Finance. The Field Force is largely grown from within through our Excellent Teacher Cadre and Guiding Coalition teams.

The Board of Trustees and Chairman of the Trust (trust-wide governance)

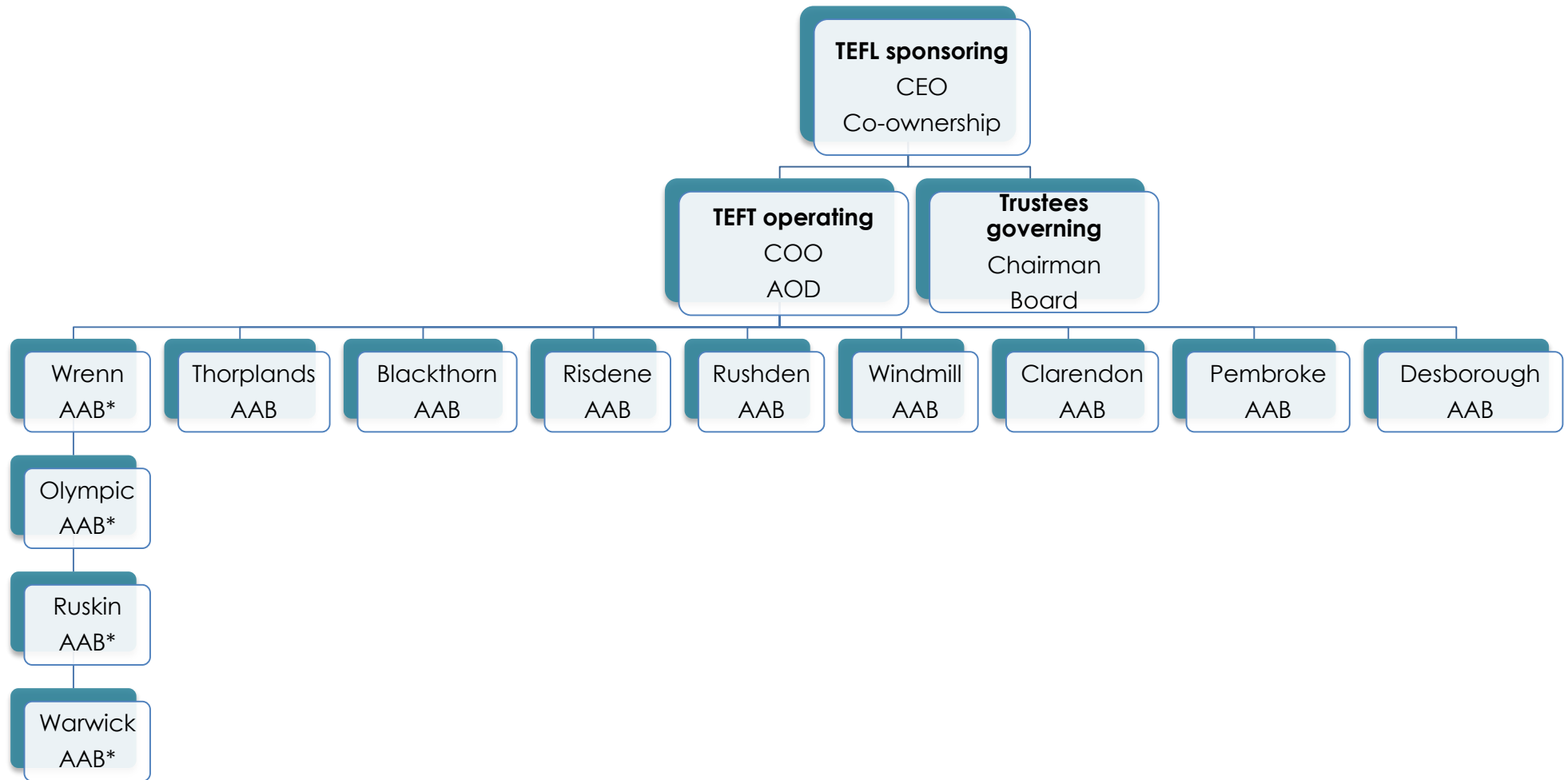
The Board of Trustees, led by the Chair of the Board of Trustees, supports and challenges the operation of the Trust and its Academies.

Academy Advisory Boards (local governance)

Academy Advisory Boards (AABs) operate in each academy or across a cluster of academies in close geographical proximity. They perform the duty of local governance with powers assigned to them by the Trust. AABs support and challenge their specific individual Academy's Principal, their Senior Leadership Teams (SLT) and the work of the Trust with that Academy. In a cluster model the AAB will perform this function for all Academies in that cluster. The Chair of each AAB is approved by the Board of Trustees.

CEO	Johnson Kane
COO	Lizzie Rowe
Chairman	Dr Ralph Townsend
AOD	Mark Stenton

Governance Model for the Trust:



*The Academy Advisory Boards for Fellowship Wellingborough Academies will operate as a cluster from July 2016 onwards to facilitate a critical mass of high quality local governance between Fellowship Academies in very close proximity to each other.

Process of Accountability

TEFL

TEFL AGM x 1

Fellowship Council Meetings x 3

Fellowship Forum Meetings x 36 (3 per Academy)

TEFT

Trustees Meetings x 4 receive Quarterly Reports from COO

Monthly report to Chair from AOD x 12

Academy Quarterly Reviews x 48 (4 per Academy)

AOD support and challenge visits x 144 (2 per term per Academy)
plus Field Force strategic development visits.

AABs

Full AAB Meetings after all Quarterly Reviews x 48 (4 per Academy)

AAB Challenge 1 (Pupil Progress) sub-committee meetings x 48 (4 per Academy)

AAB Challenge 2 (Welfare and Inclusion) sub-committee meetings x 48 (4 per Academy)

AAB Learning Walks (monitoring priorities) x 36 (3 per Academy: Teaching, Health and Safety, Pupil Premium impact)

AAB staff and student survey x 12 (1 per Academy)